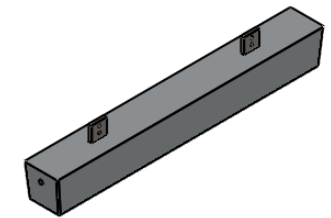


SECTION A-A
SCALE 1 : 5

NOTES:

1. Net Weight: 213.00 Kg
2. Gross Weight: 224.40 Kg
3. Insert Weight: 11.40 Kg
4. Insert quality:
Plate, bar sections: EN10025
grade S235 or S275
5. Insert Welding
All fabrication of steel
insert are according EN 10287
and EN 10288
6. Insert surface preparation
For aluminium anodes
minimum quality
ISO 8501-1 SA2 1/2
7. All dimensions are in mm



No	DATE	REVISION	REV/CHK	APPR



ENVIRONMENTAL
PROTECTION
ENGINEERING S.A.

DRAWING NAME:

ANODE GENERAL DESCRIPTION

ANODE TYPE:

AT2130S



DESIGNED	P. P.	BELONGS	E. P. E.
STUDIED		PAGE	1/1
APPROVED		SCALE	1:2
DRAWING NUMBER	DATE	14.01.2015	
		CODE	